

1747
studio
CONCEPT & DESIGN

Architecture for
the Art of Dining

Our Philosophy

1747Studio it's a Boutique Interior Design Studio specialized in F&B. The founder, Clara Voce, is an Italian Architect with a past of Pastry Chef. This makes the studio unique. For 1747studio the design of an F&B starts from the study and research of the union between the food that will be served and the design element that will contain the chef's creation : the Restaurant itself.

Today, 1747Studio team comprises a group of multinational talents and accomplished industry professionals who together offer fully integrated design solutions throughout a wide range of market sectors, especially F&B. 1747studio is connecting meaning and beauty through food in Food and Beverage Design.

Hospitality transcends languages, barriers, differences, industries, but it's based on small moments connected to food experiences. This is why for 1747studio, it's essential to produce a positive impact to people, not just through the design, but through 360 degrees experience in which food is a leader.





1747
studio
CONCEPT & DESIGN



Clara Voce
Founder — Studio 1747

A chef who became an Architect.

Clara Voce's unique background as a Pastry Chef informs every project — Dine and Design is a revolutionary process that aims to put together Architects and Chefs in order to create F&B spaces, intimately connected with "Ingredients" and "Materials".

Design
Hospitality • Corporate • Residential



1747
studio
CONCEPT & DESIGN

F&B & Hospitality

Restaurants designed as destinations —
where cuisine, culture, and space become
one experience.

Design
Hospitality • Corporate • Residential

1747
studio
CONCEPT & DESIGN

F&B
& Hospitality

Tresind, One & Only Hotel

Luxury at this level is not about what is added — it is about what is left out.



Design
Hospitality · Corporate · Residential



1747
studio
CONCEPT & DESIGN
F&B
& Hospitality



Luxury hotel dining conceived as a private residence.

The design of Trésind was envisioned as a seamless extension of its culinary identity — sophisticated, layered, and deeply rooted in cultural storytelling. The spatial concept translates the richness of Indian heritage into a contemporary architectural language, where tradition is reinterpreted through refined materiality, clean geometries, and carefully curated details. A warm and muted palette, combined with textured surfaces, bespoke finishes, and atmospheric lighting, creates a sense of intimacy and understated luxury. Every design gesture, from the flow of the layout to the balance between openness and privacy, is carefully orchestrated to enhance the guest journey, transforming dining into a multisensory experience where space, light, and gastronomy exist in perfect dialogue

Design
Hospitality • Corporate • Residential

1747
studio
CONCEPT & DESIGN

F&B
& Hospitality

Tresind, Studio

The dining room must disappear into the food and then suddenly become everything.

Design
Hospitality · Corporate · Residential



1747
studio
CONCEPT & DESIGN
Restaurant
& Hospitality



A jewel-box setting for Tresind Studio's tasting-menu experience — intimate, ceremonial, precise.

Tresind Studio is one of the world's most awarded Indian restaurants. The brief was demanding: create a space that is visually arresting enough to match the theatre of Chef Himanshu's cuisine, yet restrained enough to let each dish take full centre stage. The solution is a dark, jewel-toned interior of deep lacquered walls, handcrafted brass detailing, and a ceiling composition of dark mirror and perforated metal that contains the intimate 48-cover dining room.

Design
Hospitality • Corporate • Residential

1747
studio

CONCEPT & DESIGN

Restaurant
Hospitality



Mehzcla

The Mediterranean does not need decoration.
It needs framing.

Design

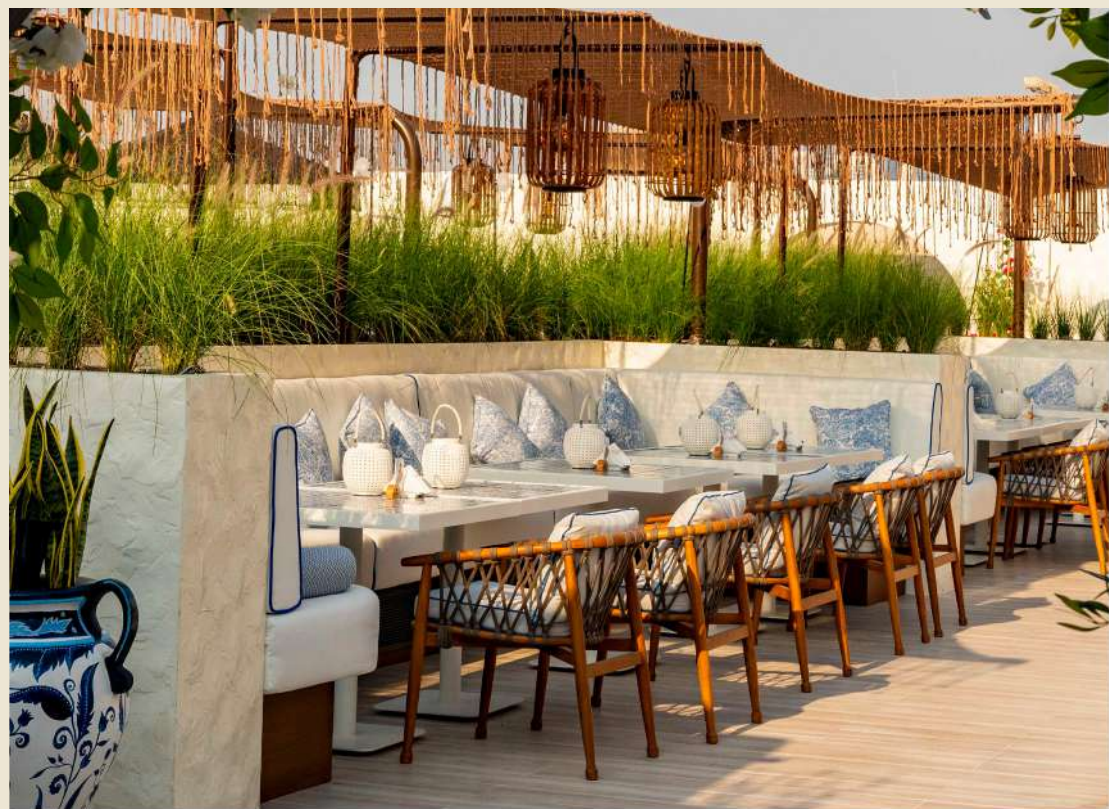
Hospitality • Corporate • Residential



1747
studio

CONCEPT & DESIGN

Restaurant
& Terrace



Where flavour becomes architecture.
Blue walls, white canvas, infinite theatre.

The redesigned interior works on a single spatial conviction — that the dining table is a stage, and everything surrounding it exists only to make what arrives on it more arresting. Deep royal blue walls, the colour of indigo dye from the Rajasthani plains, draw the room's perimeter back into shadow. White linen tabletops appear to float in that darkness, lit as if from within — blank canvases waiting for Saini's presentations.

The bar wall carries hand-lettered frames naming each signature cocktail, giving the lounge its own considered identity without pulling focus from the dining room beyond.

Design

Hospitality • Corporate • Residential

1747
studio
CONCEPT & DESIGN

F&B
& Hospitality

Tresind, Washington DC

Tresind is a contemporary fine dining restaurant that reinterprets Indian cuisine through innovation.

Design
Hospitality · Corporate · Residential



1747
studio

CONCEPT & DESIGN

F&B
& Hospitality



This design is a sophisticated exercise in material storytelling where the vaulted architectural ceiling provides a necessary lightness against the deep, saturated tones of the timber.

The volume feels both historic and avant-garde, creating an atmosphere that is moody yet expansive. The floor pattern is a particularly bold choice, grounding the room with a rhythmic, graphic energy that prevents the dark wood from feeling too static or heavy. It creates a beautiful tension with the intricate gold-leafed screen, which serves as a masterclass in subtle narrative by transforming a structural partition into a piece of bespoke art. The transition from the structured entrance to the softer, glowing lounge in the background is expertly handled. It creates a sense of compression and release that naturally draws the visitor deeper into the space. Every element, from the walnut tones to the brass accents, works in total harmony to achieve a high level of luxury that feels curated rather than cluttered.

Design
Hospitality • Corporate • Residential

1747
studio

CONCEPT & DESIGN

F&B
& Hospitality

Aamara Restaurant

A journey along the ancient trade routes —
translated into texture, light, and material.

Design
Hospitality · Corporate · Residential



1747
studio

CONCEPT & DESIGN

F&B
& Hospitality



A Silk Road through space and material.

Aamara draws on the visual vocabulary of the Silk Road — carved screens, layered textiles, aged metals and warm stone — composing them into a contemporary interior that feels both discovered and crafted. The dining room is structured as a series of intimate alcoves, each with its own light quality and material character.

The kitchen's heritage informed every material choice. Aged brass, hand-burnished plaster, dark timber joinery, and a ceiling composed of hanging [lanterns](http://www.w3.org/2000/svg) that shift from amber to deep rose as evening progresses.

Design
Hospitality • Corporate • Residential

1747
studio

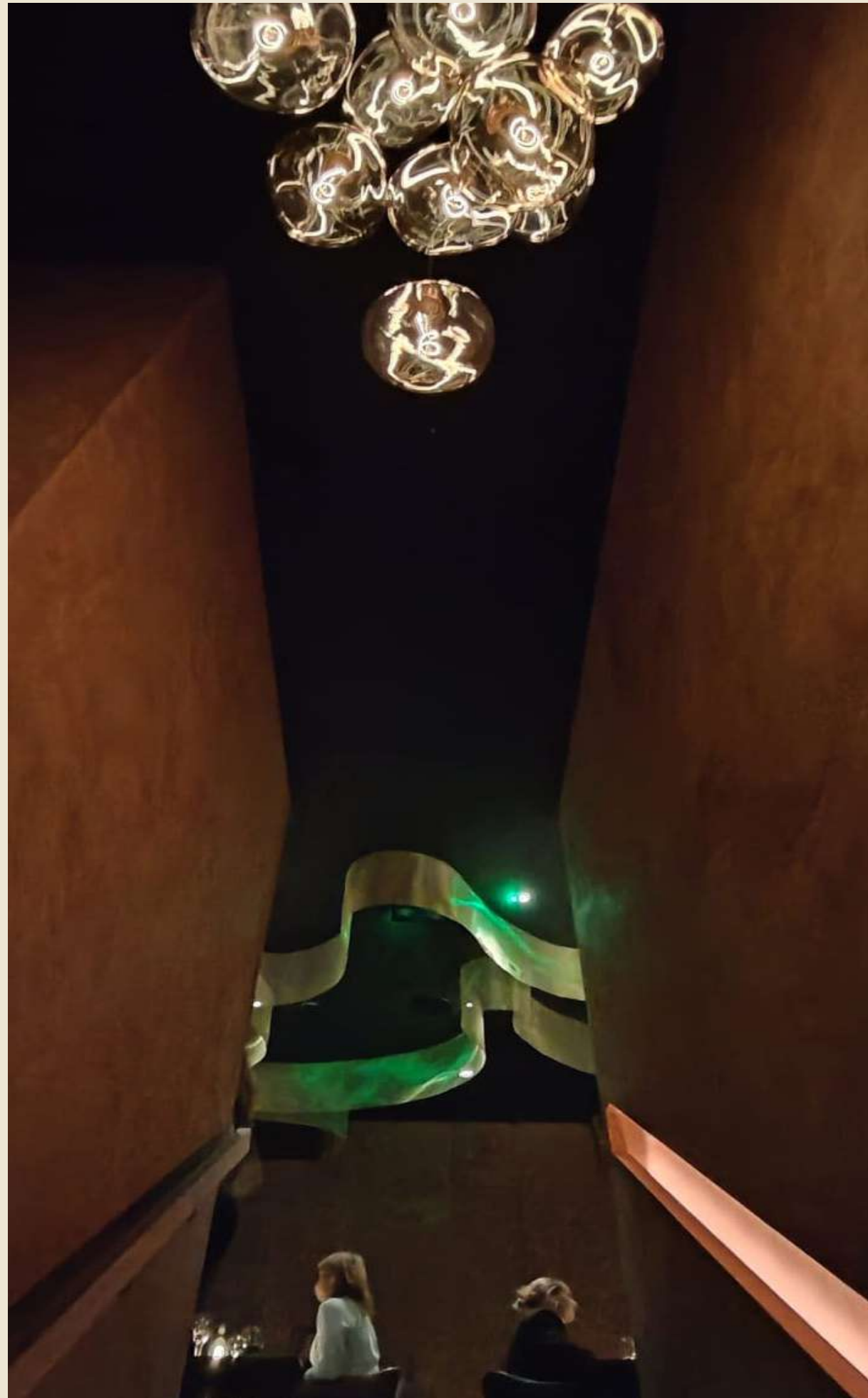
CONCEPT & DESIGN

F&B
& Hospitality

Tresind London

Immersive hospitality experience where design and gastronomy move in parallel, creating a seamless dialogue between space.

Design
Hospitality · Corporate · Residential



The restaurant unfolds through a sequence of intimate dining environments, enhancing the sense of discovery and elevating the guest journey.

The design language balances heritage and modernity — taking inspiration from the richness of Indian craftsmanship, textures, and layered narratives, while expressing them through a contemporary, refined aesthetic. Materiality, lighting, and spatial rhythm are carefully orchestrated to create a warm, theatrical, and sophisticated atmosphere where the culinary experience remains at the centre.

Design
Hospitality • Corporate • Residential

Our Work

At 1747 Studio, we design hospitality spaces with a global vision and a deep understanding of how people experience food, space, and emotion. Our work in F&B goes beyond aesthetics — we create environments that tell a story, build identity, and shape memorable guest experiences through thoughtful architecture, interior design, and operational flow.

Working internationally, we collaborate with restaurants, cafés, bars, and hospitality brands to develop concepts from idea to execution, balancing creativity, functionality, and brand positioning. From spatial planning and customer journey to materiality, atmosphere, and kitchen integration, we design spaces that are not only visually impactful but commercially intelligent and operationally efficient.



Vicolo, Dubai



Maison du Curry, Dubai



Revelry, Washington DC

44 + Hospitality Projects

Design
Hospitality • Corporate • Residential

1747
studio
interior design
Corporate
Workspace Design

ZEGNA



Corporate Workspace Design

A well-designed workspace is one of the most consequential, and most underestimated decisions a company makes.

Design
Hospitality • Corporate • Residential

1747
studio

CONCEPT & DESIGN

Corporate

Workspace Design

Zengna Office

Bleached oak, terrazzo, warm timber joinery, and black steel framing define a palette that is quietly luxurious without announcement.

ZEGNA

AMOR

Design

Hospitality · Corporate · Residential



1747
studio

CONCEPT & DESIGN

Corporate
Workspace Design



Designed across two floors in Dubai, the Zegna office carries the Italian house's founding values — precision, natural material, and the long view — into a contemporary workplace.

The terrazzo conference table with its integrated olive tree is the project's centerpiece: functional, beautiful, and entirely at ease with the brand it represents.

Design
Hospitality • Corporate • Residential

1747
studio
CONCEPT & DESIGN

Corporate
Workspace Design

WIO Bank's Expo City

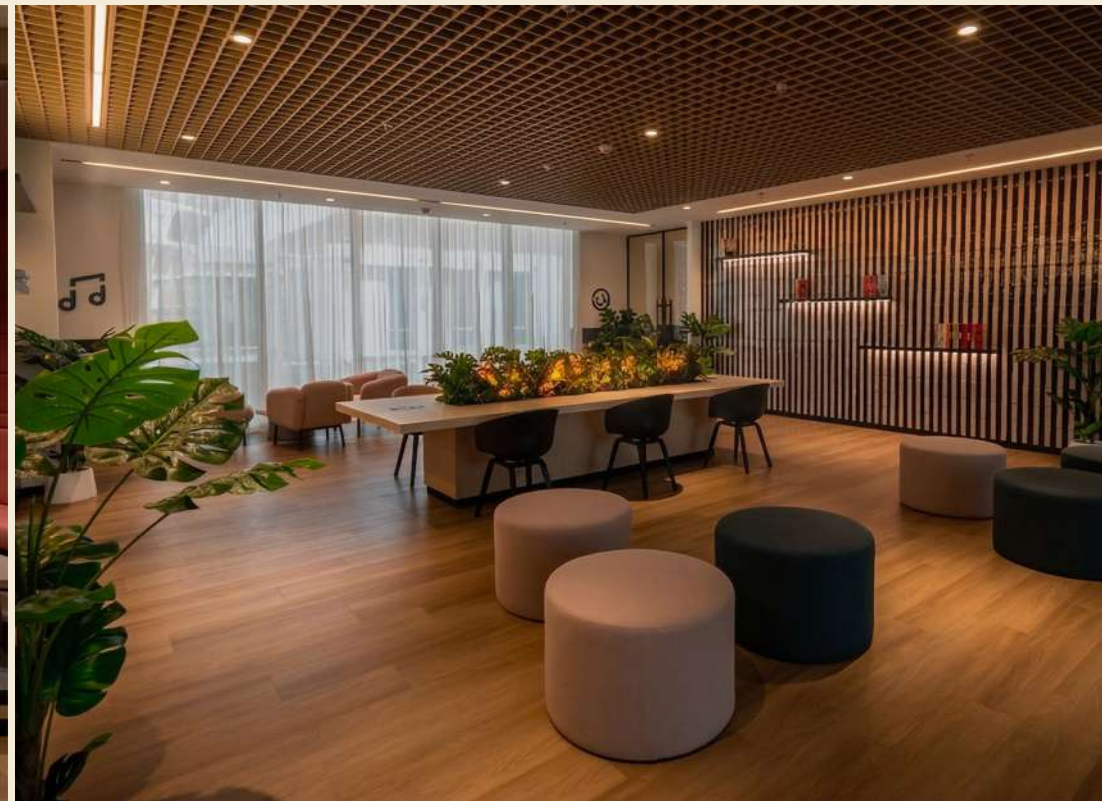
A workplace that tells you exactly who you're dealing with before anyone says a word.

Design

Hospitality · Corporate · Residential

1747
studio
CONCEPT & DESIGN

Corporate
Workspace Design



WIO Bank's Expo City office is the physical expression of a bank that was built entirely differently. The terracotta reception counter glows with the brand's own tagline; striped timber-and-navy walls carry the WIO visual language through every corridor; a central collaboration hub ringed with planting anchors the open floor between focus zones and social space. Bleached oak, deep navy, cobalt blue, and warm terracotta move through the building as a palette that is energetic, considered, and unmistakably WIO.

Design

Hospitality • Corporate • Residential

1747
studio

CONCEPT & DESIGN

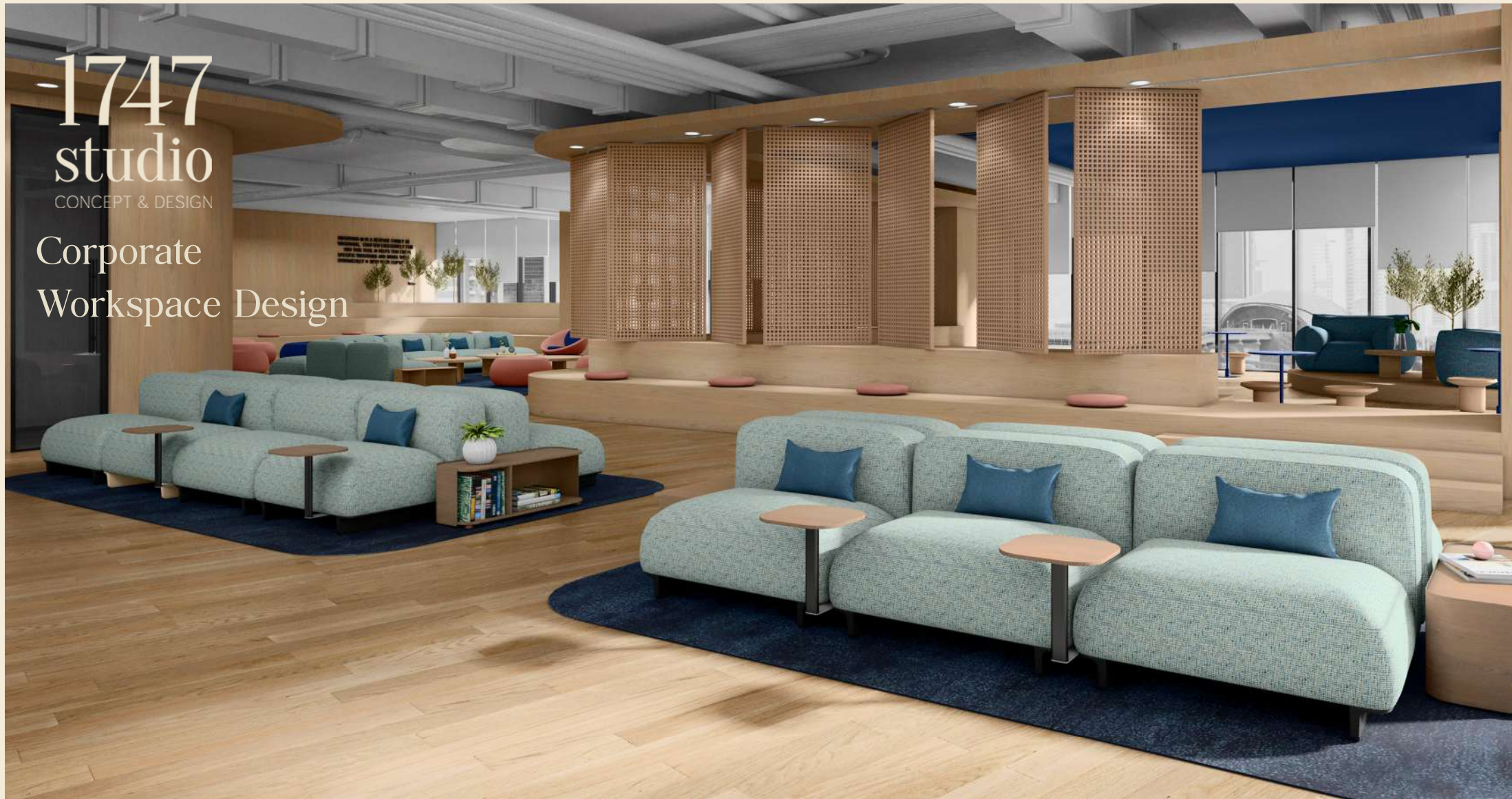
Corporate
Workspace Design

WIO Bank's Abu Dhabi

Every zone is designed around the question WIO asked from day one: What if a bank felt like somewhere you actually wanted to be?

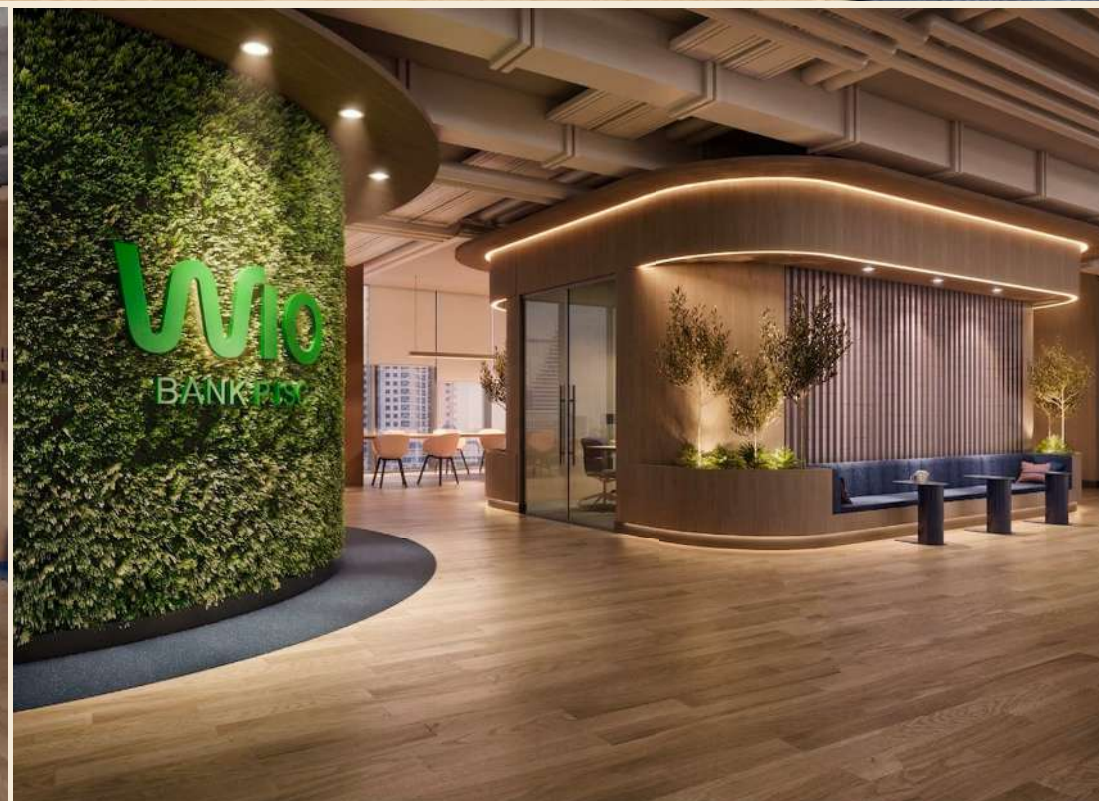
Design

Hospitality · Corporate · Residential



1747
studio
CONCEPT & DESIGN

Corporate
Workspace Design



WIO Bank's Abu Dhabi headquarters rejects every convention of what a bank should look like. A living moss wall carries the brand's identity the moment you arrive — organic, immediate, alive. Bleached oak, navy blue, sage and blush move through the floors as a palette that is warm, youthful, and entirely at ease with itself. The circular collaboration hub, the cascading lounge terraces, the soft seating islands.

Design
Hospitality • Corporate • Residential

1747
studio

CONCEPT & DESIGN

Corporate
Workspace Design

Al Afrah Investment

This is an office designed around the conviction that the people inside it matter.

Design
Hospitality · Corporate · Residential

1747
studio

CONCEPT & DESIGN

Corporate
Workspace Design



The warm cognac leather lounge, the precision of the Al Afrah Investment reception in black marquina marble and brass, and the bold tangerine meeting room with its sculptural chandelier and emperor marble table. Every zone shifts in character: from the generous, hotel-like lounge that invites lingering, to the reception that communicates authority the moment you arrive, to the meeting room that signals energy and intention. A workplace that understands the full range of a working day — and designs for all of it.

Design

Hospitality • Corporate • Residential

Our Work

At 1747 Studio, we design workplaces that go beyond function — creating environments that support culture, performance, and human connection. Our approach to office design is rooted in understanding how people work, interact, and evolve within a space, translating business identity into meaningful spatial experiences.

Working globally across different industries and markets, we create offices that balance operational efficiency with emotional intelligence. From workplace strategy and space planning to interior architecture, furniture integration, and employee experience, our work is driven by the belief that great design can improve productivity, wellbeing, and collaboration.



Corsini, Rome

Warif, Dubai



Helpfull, Dubai

22 + Corporate Projects

Design
Hospitality • Corporate • Residential

1747
studio
CONCEPT & DESIGN



Bespoke Living

Though our core business is F&B, we love the challenge of private residential projects — and we approach them exactly the same way. Our clients come to us to design their bars, kitchens, and dining rooms first. That is where we start: the place where connections between family members and friends begin. The rest follows naturally.

Design

Hospitality • Corporate • Residential

1747
studio
CONCEPT & DESIGN

Bespoke Living

Designed from the kitchen out.

Bespoke luxury modern villa design is one of the main directions of our residential service. Every project is defined by cleanliness and clarity of line, selectivity in decor, and an orientation towards practicality — spaces that are beautiful because they work, not in spite of it.

“We start from the place where connections happen — the kitchen, the bar, the table — and build the rest of the home from there.”

Design
Hospitality · Corporate · Residential

1747
studio

CONCEPT & DESIGN

Bespoke Living



A sanctuary. The quality of rest depends on the quality of the room — material warmth, soft light, and the silence a well-designed space can hold.



Designed with precision,
it becomes a daily ritual of quiet luxury.

Design
Hospitality • Corporate • Residential

1747
studio
CONCEPT & DESIGN

info@1747studio.com · +971 55 103 6798 · www.1747studio.com

Design

Hospitality · Corporate · Residential